



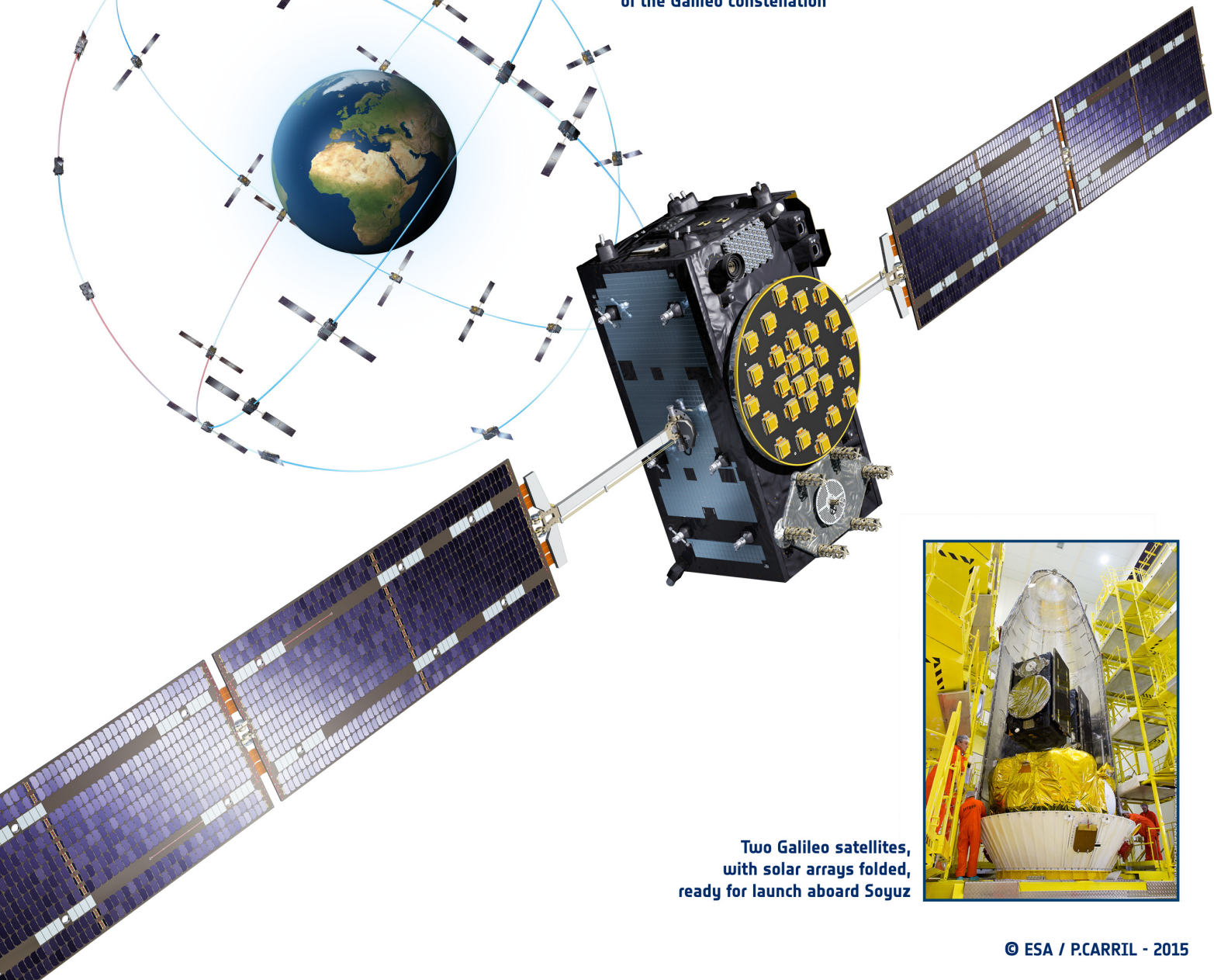
→ SATELLITE GALILEO



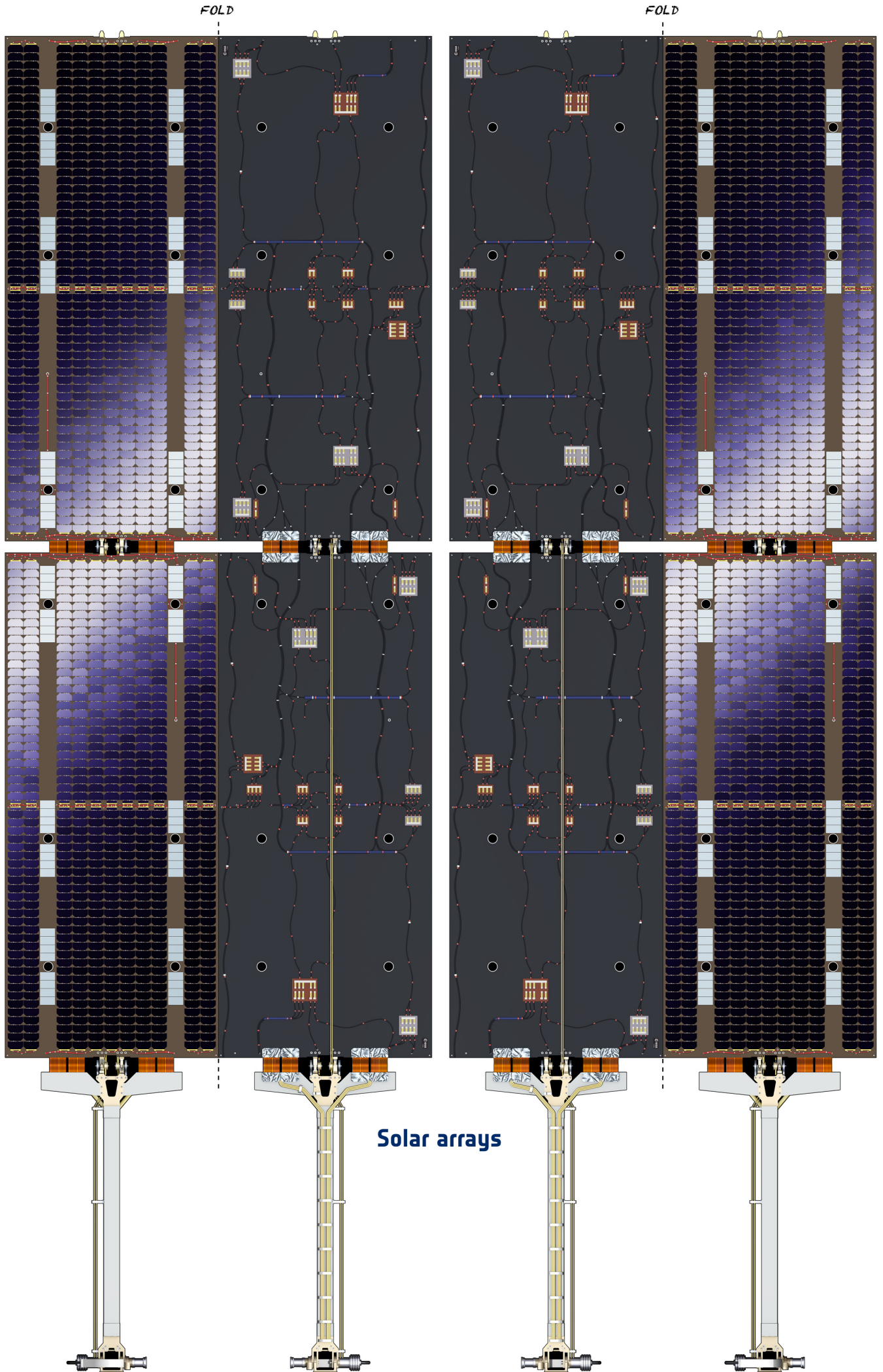
Galileo, the European navigation satellite system, currently being deployed, will enable high-precision positioning anywhere in the world. The 30 satellites in orbit, together with a network of ground stations, will provide users with high-quality positioning and timing services.



Artist's impression of the Galileo constellation



Two Galileo satellites, with solar arrays folded, ready for launch aboard Soyuz



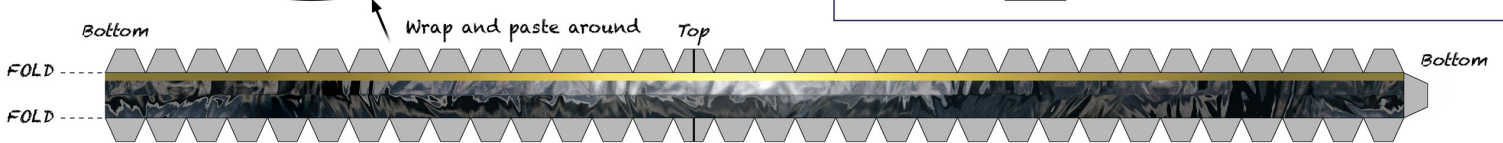
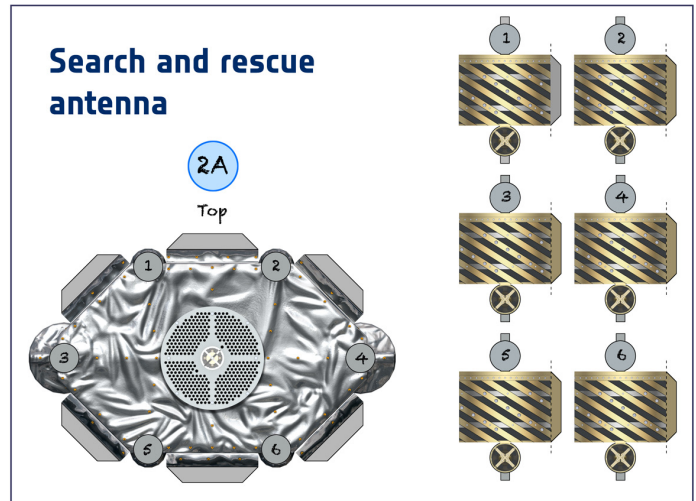
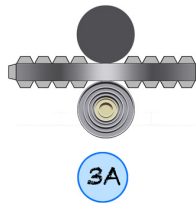
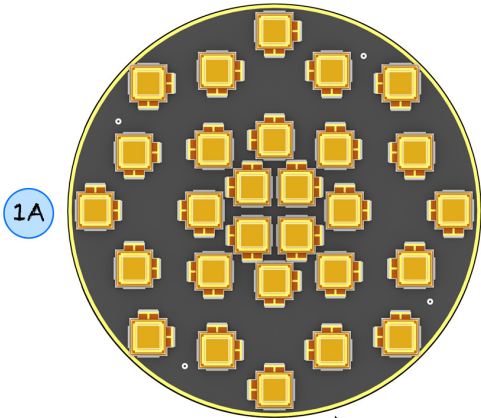


FRONT

L-band antenna

C-band antenna

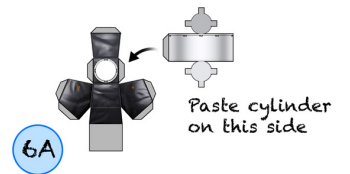
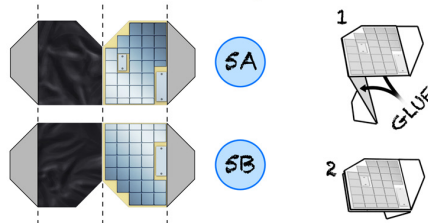
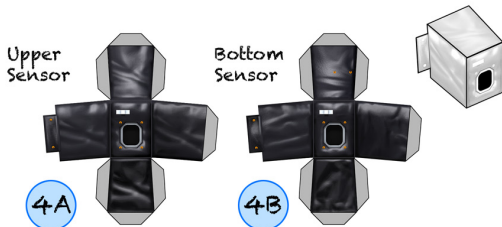
Search and rescue antenna



Infrared Earth sensors

Sensor thermal protection

TTC antenna



TOP

LEFT

Top sensors

Thrusters

TTC antenna

